



**UK**

WATERPROOF / SHOCKPROOF / DUSTPROOF



## GET TO KNOW US

### Uncompromising Performance Since 1971



At UK we understand hitting the road hard for work and play. We need our gear to be as tireless as we are. This led us to be a pioneer in the development of highly rugged plastic resin cases when

aluminum cases were the standard. Our cases were a high quality, low cost environmental solution in an industry where non-waterproof, corroding, easily dented cases were the only choice. There was no case that could withstand the abuse that goes hand-in-hand with adventure and hard work. So we made one. Over the past 40 years we have evolved from the first 309 Dry



Box to becoming an industry leader with over 200 configurations to meet your needs and protect your gear. The demand for our resilient cases has also grown—we distribute to over 68 countries throughout the world. We've kept what matters the same, though. Many of our customers and employees have been UK loyal for over 30 years. All of our engineering, design and manufacturing takes place where it all began in San Diego County. Our 60,000 square foot facility hosts a vibrant workforce of 105 employees who manage the production and assembly of all our cases. We believe quality happens here so we're keeping it that way.



## UNIQUE ADVANTAGES

When it comes to designing and constructing cases, UK goes above and beyond all others to ensure the most superior protection possible.

### AIRTIGHT SEAL

Unlike our competitors who use breathable vents that allow the continuous exchange of corrosive gasses, our seals prevent the harmful exchange of gasses until the lid is opened. What does this mean to you? That gasses (humidity, carbon monoxide, chemical agents, etc...) can not enter your case! Our cases are tested to IP67 requirements (Submersible for 30 min in 3 ft / 1 m of water).



### SILICONE O-RINGS

The main o-ring which makes UK cases\* water tight is actually made from hollow silicone rubber tubing which is chemically resistant and retains it's shape with age. Other case manufacturers often use foam neoprene o-rings which lose their shape and effectiveness over time.

\*Excludes LoadoutCase.



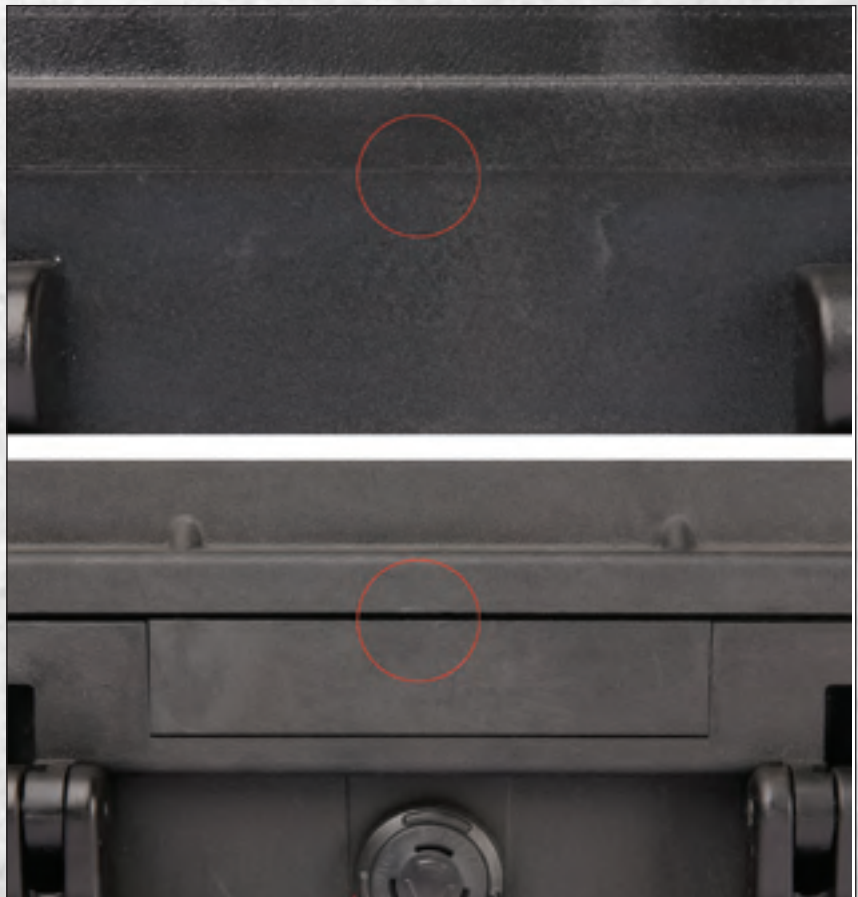
### PIANO HINGE

Our protective cases feature full length hinges which improves the overall structural integrity of the case.



### NARROW VALANCES

One way we really go above and beyond with our case construction is by ensuring that the valances (the parting line) come together tightly. We pride ourselves on making truly waterproof cases and it starts with a tight valance. Check out the difference in the photos below with the UK case on top.





**OEM**

**Absolute Customization**

UK's custom OEM case solutions are designed, engineered and manufactured to meet your exact specifications to protect your OEM equipment in the most challenging environments.



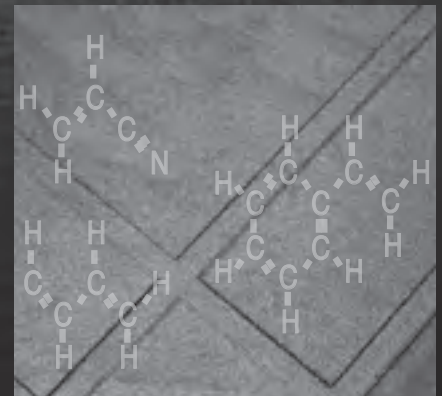
### **CUSTOM COLOR**

Purple Haze, Electric Blue, Canary Yellow...You name it, we can do it. Please contact our Case Sales Division for more details and order minimums.



### **CUSTOM RESINS**

Special resins are available for flame retardant, anti-static or EMI/RF shielding needs. Please contact our Case Sales Division for more details and order minimums.



### **ABS**

Our hard protective boxes are tough yet lightweight because we construct them using high-impact, field-repairable ABS resin. ABS better resists becoming brittle in cold weather and is less susceptible to warpage.

## PRIVATE LABELING



Align your company with UK's world-renowned reputation of excellence by taking advantage of our private labeling program. We can easily deliver your company logo on the outside of any of our products using our in-house pad printing and custom design molding. Custom labels are also available.

Please contact our Case Sales Division for more information.  
**(800) 852-7483**  
[casesales@uwkinetics.com](mailto:casesales@uwkinetics.com)



## INSTRUMENT PANEL FRAMES

The UltraCase, UltraBox and Dry Box can be configured for use with custom instrument panels. UltraCase and Dry Box are offered with a watertight accessory panel mounting frame that is factory installed. The panel frame is solvent welded to the inside wall of the case. Our competitors have to rivet or screw in their panel frames which compromises the integrity of the watertight seal.

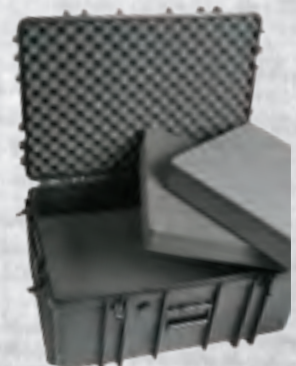


## CUSTOM FOAM

When ultimate protection is necessary, foam padding is often the best solution. For a user configurable foam solution, choose our Diced Pluck Foam and simply remove the scored cubes in the shape required to protect your device. For a superior fit, contact us about our Full Service Custom Foam Program. Simply send us a sample of your product or a drawing and we will choose a case and foam solution that best fits your needs. In addition, we have Qualified Value Added Resellers that can also help you find a custom case solution at a location near you. No matter which option you choose, we'll make sure that you get the highest level of service at a reasonable price.



Please contact our Case Sales Division for more information.  
**(800) 852-7483**  
[casesales@uwkinetics.com](mailto:casesales@uwkinetics.com)





# ULTRABOX / 7 Compact Sizes

With seven sizes to choose from, custom options, and rugged construction, the UltraBox is expertly designed to keep small electronic equipment, optics and personal possessions safe.



## PRESSURE EQUALIZER

Our proprietary pressure relief valve is essential after external pressure changes. Our unique design equalizes internal pressure only after the latch is opened, preventing entry of moisture or corrosive gasses during transit.



## ATTACHMENT POINTS

The UltraBox is equipped with a molded in strap attachment point for use when securing the box is necessary. The boxes are also easily lockable if the corner lock points are utilized.



## BUILT IN PANEL MOUNT FRAME

Each UltraBox comes standard with a molded in panel mount bracket making installing an electronic instrument panel quick and easy. No need to purchase extra accessories.



## SHOCK ABSORBING LINER

Our unique rubber liners are ribbed to provide several times more shock protection than simple flat liners. This prevents damage to fragile items no matter what the box endures. If needed, the liners can be removed without compromising the watertight seal.



## SOLID & TRANSPARENT LIDS

Most sizes are available with your choice of a solid lid or a transparent lid. Choose the transparent lid for quick identification of the contents and the solid lid for protection against light or prying eyes.



## LID POUCH

We offer a removable mesh lid-pouch that easily attaches to any UltraBox for extra storage and organization. Perfect for keys, cell phone or small parts that are otherwise easily lost.

## OPTIONAL CONFIGURATIONS

EMPTY / PADDED LINER / LID POUCH WITH PADDED LINER\*

## SIZES / COLORS



### 206

**Internal:** 5.5 x 3.5 x 2.0 in / 14,0 x 9,0 x 5,1 cm  
**External:** 6.7 x 4.7 x 2.3 in / 17,0 x 11,9 x 5,8 cm  
**Lid:** 0.6 in / 1,5 cm **Base:** 1.4 in / 3,5 cm  
**Weight:** 0.4 lbs / 0,18 kg



### 308

**Internal:** 7.9 x 4.7 x 2.6 in / 20,1 x 11,9 x 6,5 cm  
**External:** 9.1 x 5.9 x 2.9 in / 23,1 x 15,0 x 7,4 cm  
**Lid:** 1.0 in / 2,5 cm **Base:** 1.6 in / 4,0 cm  
**Weight:** 0.7 lbs / 0,32 kg



### 406

**Internal:** 5.5 x 3.5 x 3.6 in / 14,0 x 9,0 x 9,1 cm  
**External:** 6.7 x 4.7 x 3.9 in / 17,0 x 11,9 x 9,9 cm  
**Lid:** 0.6 in / 1,5 cm **Base:** 3.0 in / 7,5 cm  
**Weight:** 0.5 lbs / 0,23 kg



### 408

**Internal:** 7.9 x 4.7 x 4.0 in / 20,1 x 11,9 x 10,2 cm  
**External:** 9.1 x 5.9 x 4.3 in / 23,1 x 15,0 x 10,9 cm  
**Lid:** 1.0 in / 2,5 cm **Base:** 3.0 in / 7,5 cm  
**Weight:** 0.9 lbs / 0,41 kg



### 207

**Internal:** 6.7 x 2.8 x 2.2 in / 17,0 x 7,1 x 5,6 cm  
**External:** 7.9 x 3.9 x 2.4 in / 20,1 x 9,9 x 6,1 cm  
**Lid:** 0.6 in / 1,5 cm **Base:** 1.6 in / 4,1 cm  
**Weight:** 0.4 lbs / 0,18 kg



### 312

**Internal:** 11.5 x 8.9 x 3.1 in / 29,2 x 22,6 x 7,9 cm  
**External:** 12.2 x 10.4 x 3.3 in / 31,0 x 26,4 x 8,4 cm  
**Lid:** 1.0 in / 2,5 cm **Base:** 2.1 in / 5,3 cm  
**Weight:** 1.9 lbs / 0,9 kg  
 Available with or without handstrap and foam.  
 \*No padded liners available



### 307

**Internal:** 6.7 x 2.8 x 3.0 in / 17,0 x 7,1 x 7,6 cm  
**External:** 7.9 x 3.9 x 3.2 in / 20,1 x 9,9 x 8,1 cm  
**Lid:** 0.6 in / 1,5 cm **Base:** 2.4 in / 6,0 cm  
**Weight:** 0.7 lbs / 0,32 kg



## DRY BOX / 3 Intermediate Sizes

Our injection molded Dry Box cases are made from engineering grade high-impact ABS resin and fit with a watertight, dustproof o-ring seal making them extremely tough and resistant to scratches, dents and corrosion.



### HOLLOW SILICONE O-RINGS

The main o-ring which makes UK cases water tight is actually made from hollow silicone rubber tubing which is chemically resistant and retains it's shape with age. Other case manufacturers often use foam neoprene o-rings which lose their shape and effectiveness over time.



### HAND STRAP

Dry Boxes come standard with a nylon hand strap for comfortable carrying and transportation.



### HANDLE

The 309 Dry Box comes with a molded in carrying handle.





## PANEL FRAMES

For electronic applications that are too small for the UltraCase, our Dry Boxes provide an ideal solution. They utilize the same reliable solvent welded panel frame design at a lower cost.

## JUST THE RIGHT SIZE

Our Dry Boxes offer the same affordable protection as the UltraCase. When an all environment container is required but an UltraCase is too large for the job, Dry Boxes are the solution.



## OPTIONAL CONFIGURATIONS

EMPTY / WITH FOAM / WITH PANEL FRAME

SIZES / COLORS    \*



### 309

**Internal:** 8.5 x 6.0 x 3.0 in / 21,6 x 15,2 x 7,6 cm

**External:** 9.0 x 7.9 x 3.5 in / 22,9 x 20,1 x 8,9 cm

**Lid:** 0.7 in / 1,8 cm **Base:** 2.3 in / 5,8 cm

**Weight:** 1.4 lbs / 0,64 kg

\*Available in all colors



### 409

**Internal:** 8.5 x 6.0 x 3.7 in / 21,6 x 15,2 x 9,4 cm

**External:** 9.4 x 7.2 x 4.0 in / 23,9 x 18,3 x 10,2 cm

**Lid:** 0.7 in / 1,8 cm **Base:** 3.0 in / 7,6 cm

**Weight:** 1.4 lbs / 0,64 kg

\*Only available in black



### 609

**Internal:** 8.5 x 6.0 x 5.7 in / 21,6 x 15,2 x 14,5 cm

**External:** 9.4 x 7.2 x 6.2 in / 23,9 x 18,3 x 15,7 cm

**Lid:** 0.7 in / 1,8 cm **Base:** 5.0 in / 12,7 cm

**Weight:** 1.7 lbs / 0,77 kg

\*Only available in black



# ULTRACASE

7 Large Sizes

Applications are endless for our most versatile member of the UK case family. The briefcase style design of the UltraCase series makes it suitable carrying just about anything while the ABS construction ensures the contents are absolutely secure.



## PRESSURE RELEASE LATCH

Our proprietary pressure equalization system equalizes internal pressure only when latch is opened.



## COMFORT HANDLES

Our soft grip handles offer extreme comfort when carrying a fully packed UltraCase.



## LOCKING POINTS

The UltraCase is easily lockable by securing a pad lock through any of the 2 locking points conveniently placed near the front latches.

## OUR MOST VERSATILE CASE SERIES

90 percent of the time the UltraCase will be your go to container when searching for a custom case solution. Our 7 sizes can be configured using a combination of materials, custom foam, panel frames and colors.



## OPTIONAL CONFIGURATIONS

EMPTY / WITH FOAM / WITH PANEL FRAME

SIZES

COLORS



### 613

**Internal:** 13.4 x 8.9 x 5.6 in / 34,0 x 22,6 x 14,2 cm  
**External:** 14.1 x 10.6 x 6.1 in / 35,8 x 26,9 x 15,5 cm  
**Lid:** 1.8 in / 4.6 cm **Base:** 3.8 in / 9.7 cm  
**Weight:** 4.5 lbs / 2.0 kg



### 416

**Internal:** 16.9 x 9.9 x 4.6 in / 42,9 x 25,1 x 11,7 cm  
**External:** 17.6 x 11.7 x 5.2 in / 44,7 x 29,7 x 13,2 cm  
**Lid:** 1.8 in / 4.6 cm **Base:** 2.8 in / 6.9 cm  
**Weight:** 5.2 lbs / 2.4 kg



### 716

**Internal:** 16.9 x 9.9 x 6.5 in / 42,9 x 25,1 x 16,5 cm  
**External:** 17.6 x 11.7 x 7.1 in / 44,7 x 29,7 x 18,0 cm  
**Lid:** 1.8 in / 4.6 cm **Base:** 4.7 in / 11.9 cm  
**Weight:** 6.0 lbs / 2.7 kg



### 916

**Internal:** 16.9 x 9.9 x 8.0 in / 42,9 x 25,1 x 20,3 cm  
**External:** 17.6 x 11.7 x 8.6 in / 44,7 x 29,7 x 22,8 cm  
**Lid:** 3.3 in / 8.4 cm **Base:** 4.7 in / 11.9 cm  
**Weight:** 6.9 lbs / 3.1 kg



### 518

**Internal:** 17.8 x 12.8 x 5.1 in / 45,2 x 32,5 x 13,0 cm  
**External:** 18.6 x 14.5 x 5.9 in / 47,2 x 36,8 x 15,0 cm  
**Lid:** 1.8 in / 4.6 cm **Base:** 3.3 in / 8.4 cm  
**Weight:** 7.7 lbs / 3.5 kg



### 718

**Internal:** 17.8 x 12.8 x 6.8 in / 45,2 x 32,5 x 17,3 cm  
**External:** 18.6 x 14.5 x 7.7 in / 47,2 x 36,8 x 19,6 cm  
**Lid:** 1.8 in / 4.6 cm **Base:** 5.0 in / 12.7 cm  
**Weight:** 8.8 lbs / 4.0 kg



### 821

**Internal:** 20.9 x 12.9 x 8.4 in / 53,1 x 32,8 x 21,3 cm  
**External:** 21.7 x 14.8 x 9.2 in / 55,1 x 37,6 x 23,4 cm  
**Lid:** 2.2 in / 5.6 cm **Base:** 6.2 in / 15.7 cm  
**Weight:** 11.0 lbs / 5.0 kg



# LOADOUTCASE

12 Extra Large Sizes

The LoadoutCase weighs less, provides greater chemical resistance, comes in twelve sizes and is ideal for protecting sizable gear or sensitive electronic equipment.



## REMOVABLE HINGE ROD

Easily remove the lid from the body of the case by rotating the tab on the hinge rod. Its removal is only possible when the lid is opened, preventing theft of contents.



## PULL-OUT HANDLES

The pull-up handles are made from a resilient glass-filled polypropylene resin. A handle lock allows it to be securely locked into place, extended or retracted.

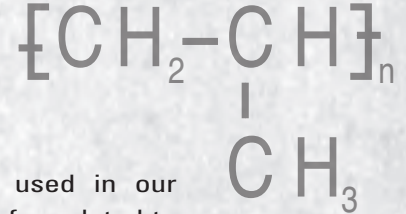


## SPRING ACTION HANDLES

Our new Spring Action Handles stay out of your way when not in use.

## SUPERIOR CHEMICAL RESISTANCE

Because our LoadoutCase provides high-level resistance to heat and chemicals, they are valued by professionals across the petroleum industry.



## LIGHTWEIGHT PERFORMANCE

The polypropylene resin used in our LoadoutCase is specifically formulated to be lightweight and strong enough to stand up to tough industrial environments.

### SIZES / COLORS / OPTIONAL CONFIGURATIONS EMPTY / WITH FOAM



#### 822

**Internal:** 21.8 x 17.8 x 8.2 in / 55,4 x 45,2 x 20,8 cm  
**External:** 23.8 x 20.1 x 9.7 in / 60,5 x 51,1 x 24,6 cm  
**Lid:** 2.1 in / 5,3 cm **Base:** 6.1 in / 15,5 cm  
**Weight:** 20.8 lbs / 9.4 kg



#### 827

**Internal:** 26.8 x 17.8 x 8.2 in / 68,1 x 45,2 x 20,8 cm  
**External:** 28.8 x 20.1 x 9.7 in / 73,2 x 51,1 x 24,6 cm  
**Lid:** 2.1 in / 5,3 cm **Base:** 6.1 in / 15,5 cm  
**Weight:** 22.8 lbs / 10.3 kg



#### 1022

**Internal:** 21.8 x 17.8 x 10.8 in / 55,4 x 45,2 x 27,4 cm  
**External:** 23.8 x 20.1 x 12.2 in / 60,5 x 51,1 x 31,0 cm  
**Lid:** 4.7 in / 11,9 cm **Base:** 6.1 in / 15,5 cm  
**Weight:** 23.0 lbs / 10.4 kg



#### 1027

**Internal:** 26.8 x 17.8 x 10.8 in / 68,1 x 45,2 x 27,4 cm  
**External:** 28.8 x 20.1 x 12.2 in / 73,2 x 51,1 x 31,0 cm  
**Lid:** 4.7 in / 11,9 cm **Base:** 6.1 in / 15,5 cm  
**Weight:** 25.4 lbs / 11.5 kg



#### 1122

**Internal:** 21.8 x 17.8 x 10.8 in / 55,4 x 45,2 x 27,4 cm  
**External:** 23.8 x 20.1 x 12.2 in / 60,5 x 51,1 x 31,0 cm  
**Lid:** 2.1 in / 5,3 cm **Base:** 8.7 in / 22,1 cm  
**Weight:** 22.4 lbs / 10.2 kg



#### 1127

**Internal:** 26.8 x 17.8 x 10.8 in / 68,1 x 45,2 x 27,4 cm  
**External:** 28.8 x 20.1 x 12.2 in / 73,2 x 51,1 x 31,0 cm  
**Lid:** 2.1 in / 5,3 cm **Base:** 8.7 in / 22,1 cm  
**Weight:** 24.5 lbs / 11.1 kg



#### 1322

**Internal:** 21.8 x 17.8 x 13.4 in / 55,4 x 45,2 x 34,0 cm  
**External:** 23.8 x 20.1 x 14.8 in / 60,5 x 51,1 x 37,6 cm  
**Lid:** 4.7 in / 11,9 cm **Base:** 8.7 in / 22,0 cm  
**Weight:** 24.6 lbs / 11.2 kg



#### 1327

**Internal:** 26.8 x 17.8 x 13.4 in / 68,1 x 45,2 x 34,0 cm  
**External:** 28.8 x 20.1 x 14.8 in / 73,2 x 51,1 x 37,6 cm  
**Lid:** 4.7 in / 11,9 cm **Base:** 8.7 in / 22,1 cm  
**Weight:** 27.1 lbs / 12.3 kg



#### 1422

**Internal:** 21.8 x 17.8 x 13.3 in / 55,4 x 45,2 x 33,8 cm  
**External:** 23.8 x 20.1 x 14.8 in / 60,5 x 51,1 x 37,6 cm  
**Lid:** 2.1 in / 5,3 cm **Base:** 11.2 in / 28,4 cm  
**Weight:** 24.6 lbs / 11.2 kg



#### 1427

**Internal:** 26.8 x 17.8 x 13.3 in / 68,1 x 45,2 x 33,8 cm  
**External:** 28.8 x 20.1 x 14.8 in / 73,2 x 51,1 x 37,6 cm  
**Lid:** 2.1 in / 5,3 cm **Base:** 11.2 in / 28,4 cm  
**Weight:** 26.3 lbs / 11.9 kg



#### 1622

**Internal:** 21.8 x 17.8 x 15.9 in / 55,4 x 45,2 x 40,4 cm  
**External:** 23.8 x 20.1 x 17.2 in / 60,5 x 51,1 x 43,7 cm  
**Lid:** 4.7 in / 11,9 cm **Base:** 11.2 in / 28,4 cm  
**Weight:** 26.3 lbs / 11.9 kg



#### 1627

**Internal:** 26.8 x 17.8 x 15.9 in / 68,1 x 45,2 x 40,4 cm  
**External:** 28.8 x 20.1 x 17.2 in / 73,2 x 51,1 x 43,7 cm  
**Lid:** 4.7 in / 11,9 cm **Base:** 11.2 in / 28,4 cm  
**Weight:** 29.0 lbs / 13.1 kg



# TRANSIT CASE

12 Extra Large Sizes

Our extra large Transit Cases are available in twelve sizes and are ideal for protecting equipment from rain, humidity and harmful gasses. The ABS resins used in these cases make them ideal for OEM customization and field repairability.



## SPRING ACTION HANDLES

Our new Spring Action Handles stay out of your way when not in use.



## PULL-OUT HANDLES

The pull-up handles on our Transit Cases are made from a resilient glass-filled polypropylene resin. A handle lock allows it to be securely locked into place, extended or retracted.



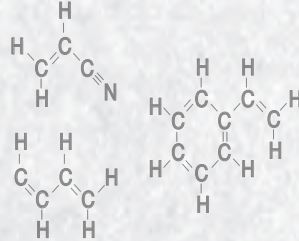
## REMOVABLE HINGE ROD

Easily remove the lid from the body of the case by rotating the tab on the hinge rod. Its removal is only possible when the lid is opened, preventing theft of contents.



## ABS ADVANTAGE

Excellent resistance to impact and abrasion are just some of the many reasons we choose to mold cases from ABS. This aggressively tough resin resists cracking in extreme cold temperatures, is field repairable and holds its shape better than any other polymer.



## SOLID BARRIER AGAINST PATHOGENS

Another great feature of ABS resin is its ability to completely block out the absorption of any biohazardous material that would otherwise penetrate the porous structure of many competitors cases.

### SIZES / COLORS / OPTIONAL CONFIGURATIONS EMPTY / WITH FOAM



#### 822

**Internal:** 21.8 x 17.8 x 8.2 in / 55,4 x 45,2 x 20,8 cm  
**External:** 23.8 x 20.1 x 9.7 in / 60,5 x 51,1 x 24,6 cm  
**Lid:** 2.1 in / 5,3 cm **Base:** 6.1 in / 15,5 cm  
**Weight:** 22.0 lbs / 10.0 kg



#### 827

**Internal:** 26.8 x 17.8 x 8.2 in / 68,1 x 45,2 x 20,8 cm  
**External:** 28.8 x 20.1 x 9.7 in / 73,2 x 51,1 x 24,6 cm  
**Lid:** 2.1 in / 5,3 cm **Base:** 6.1 in / 15,5 cm  
**Weight:** 24.0 lbs / 10.9 kg



#### 1022

**Internal:** 21.8 x 17.8 x 10.8 in / 55,4 x 45,2 x 27,4 cm  
**External:** 23.8 x 20.1 x 12.2 in / 60,5 x 51,1 x 31,0 cm  
**Lid:** 4.7 in / 11,9 cm **Base:** 6.1 in / 15,5 cm  
**Weight:** 24.0 lbs / 10.9 kg



#### 1027

**Internal:** 26.8 x 17.8 x 10.8 in / 68,1 x 45,2 x 27,4 cm  
**External:** 28.8 x 20.1 x 12.2 in / 73,2 x 51,1 x 31,0 cm  
**Lid:** 4.7 in / 11,9 cm **Base:** 6.1 in / 15,5 cm  
**Weight:** 26.0 lbs / 11.8 kg



#### 1122

**Internal:** 21.8 x 17.8 x 10.8 in / 55,4 x 45,2 x 27,4 cm  
**External:** 23.8 x 20.1 x 12.2 in / 60,5 x 51,1 x 31,0 cm  
**Lid:** 2.1 in / 5,3 cm **Base:** 8.7 in / 22,1 cm  
**Weight:** 24.0 lbs / 10.9 kg



#### 1127

**Internal:** 26.8 x 17.8 x 10.8 in / 68,1 x 45,2 x 27,4 cm  
**External:** 28.8 x 20.1 x 12.2 in / 73,2 x 51,1 x 31,0 cm  
**Lid:** 2.1 in / 5,3 cm **Base:** 8.7 in / 22,1 cm  
**Weight:** 26.0 lbs / 11.8 kg



#### 1322

**Internal:** 21.8 x 17.8 x 13.4 in / 55,4 x 45,2 x 34,0 cm  
**External:** 23.8 x 20.1 x 14.8 in / 60,5 x 51,1 x 37,6 cm  
**Lid:** 4.7 in / 11,9 cm **Base:** 8.7 in / 22,0 cm  
**Weight:** 26.0 lbs / 11.8 kg



#### 1327

**Internal:** 26.8 x 17.8 x 13.4 in / 68,1 x 45,2 x 34,0 cm  
**External:** 28.8 x 20.1 x 14.8 in / 73,2 x 51,1 x 37,6 cm  
**Lid:** 4.7 in / 11,9 cm **Base:** 8.7 in / 22,1 cm  
**Weight:** 28.0 lbs / 12.7 kg



#### 1422

**Internal:** 21.8 x 17.8 x 13.3 in / 55,4 x 45,2 x 33,8 cm  
**External:** 23.8 x 20.1 x 14.8 in / 60,5 x 51,1 x 37,6 cm  
**Lid:** 2.1 in / 5,3 cm **Base:** 11.2 in / 28,4 cm  
**Weight:** 26.0 lbs / 11.8 kg



#### 1427

**Internal:** 26.8 x 17.8 x 13.3 in / 68,1 x 45,2 x 33,8 cm  
**External:** 28.8 x 20.1 x 14.8 in / 73,2 x 51,1 x 37,6 cm  
**Lid:** 2.1 in / 5,3 cm **Base:** 11.2 in / 28,4 cm  
**Weight:** 28.0 lbs / 12.7 kg



#### 1622

**Internal:** 21.8 x 17.8 x 15.9 in / 55,4 x 45,2 x 40,4 cm  
**External:** 23.8 x 20.1 x 17.2 in / 60,5 x 51,1 x 43,7 cm  
**Lid:** 4.7 in / 11,9 cm **Base:** 11.2 in / 28,4 cm  
**Weight:** 28.0 lbs / 12.7 kg



#### 1627

**Internal:** 26.8 x 17.8 x 15.9 in / 68,1 x 45,2 x 40,4 cm  
**External:** 28.8 x 20.1 x 17.2 in / 73,2 x 51,1 x 43,7 cm  
**Lid:** 4.7 in / 11,9 cm **Base:** 11.2 in / 28,4 cm  
**Weight:** 30.0 lbs / 13.6 kg

# CASE DIMENSIONS

	PRODUCT	INTERNAL			EXTERNAL			PADDED LINERS	FOAM	PULL HANDLE & WHEELS	PANEL FRAME	CARRY ON
		(in / cm) LENGTH x WIDTH x DEPTH			(in / cm) LENGTH x WIDTH x DEPTH							
ULTRABOX	206	5.5 x 3.5 x 2.0 in	14,0 x 9,0 x 5,1 cm	6.7 x 4.7 x 2.3 in	17,0 x 11,9 x 5,8 cm	●		●	●			
	406	5.5 x 3.5 x 3.6 in	14,0 x 9,0 x 9,1 cm	6.7 x 4.7 x 3.9 in	17,0 x 11,9 x 9,9 cm	●		●	●			
	207	6.7 x 2.8 x 2.2 in	17,0 x 7,1 x 5,6 cm	7.9 x 3.9 x 2.4 in	20,1 x 9,9 x 6,1 cm	●		●	●			
	307	6.7 x 2.8 x 3.0 in	17,0 x 7,1 x 7,6 cm	7.9 x 3.9 x 3.2 in	20,1 x 9,9 x 8,1 cm	●		●	●			
	308	7.9 x 4.7 x 2.6 in	20,1 x 11,9 x 6,6 cm	9.1 x 5.9 x 2.9 in	23,1 x 15,0 x 7,4 cm	●		●	●			
	408	7.9 x 4.7 x 4.0 in	20,1 x 11,9 x 10,2 cm	9.1 x 5.9 x 4.3 in	23,1 x 15,0 x 10,9 cm	●		●	●			
	312	11.5 x 8.9 x 3.1 in	29,2 x 22,6 x 7,9 cm	12.2 x 10.4 x 3.3 in	31,0 x 26,4 x 8,4 cm	●	●	●	●			
DRY BOX	309	8.5 x 6.0 x 3.0 in	21,6 x 15,2 x 7,6 cm	9.0 x 7.9 x 3.5 in	22,9 x 20,1 x 8,9 cm	●		●	●			
	409	8.5 x 6.0 x 3.7 in	21,6 x 15,2 x 9,4 cm	9.4 x 7.2 x 4.1 in	23,9 x 18,3 x 10,4 cm	●		●	●			
	609	8.5 x 6.0 x 5.7 in	21,6 x 15,2 x 14,5 cm	9.4 x 7.2 x 6.2 in	23,9 x 18,3 x 15,7 cm	●		●	●			
ULTRACASE	613	13.4 x 8.9 x 5.6 in	34,0 x 22,6 x 14,2 cm	14.1 x 10.6 x 6.1 in	35,8 x 26,9 x 15,5 cm	●		●	●			
	416	16.9 x 9.9 x 4.6 in	42,9 x 25,1 x 11,7 cm	17.6 x 11.7 x 5.2 in	44,7 x 29,7 x 13,2 cm	●		●	●			
	716	16.9 x 9.9 x 6.5 in	42,9 x 25,1 x 16,5 cm	17.6 x 11.7 x 7.1 in	44,7 x 29,7 x 18,0 cm	●		●	●			
	916	16.9 x 9.9 x 8.0 in	42,9 x 25,1 x 20,3 cm	17.6 x 11.7 x 8.6 in	44,7 x 29,7 x 22,8 cm	●		●	●			
	518	17.8 x 12.8 x 5.1 in	45,2 x 32,5 x 13,0 cm	18.6 x 14.5 x 5.9 in	47,2 x 36,8 x 15,0 cm	●		●	●			
	718	17.8 x 12.8 x 6.8 in	45,2 x 32,5 x 17,3 cm	18.6 x 14.5 x 7.7 in	47,2 x 36,8 x 19,6 cm	●		●	●			
	821	20.9 x 12.9 x 8.4 in	53,1 x 32,8 x 21,3 cm	21.7 x 14.8 x 9.2 in	55,1 x 37,6 x 23,4 cm	●		●	●			
LOADOUTCASE / TRANSIT CASE	822	21.8 x 17.8 x 8.2 in	55,4 x 45,2 x 20,8 cm	23.8 x 20.1 x 9.7 in	60,5 x 51,1 x 24,6 cm	●	●					
	1022	21.8 x 17.8 x 10.8 in	55,4 x 45,2 x 27,4 cm	23.8 x 20.1 x 12.2 in	60,5 x 51,1 x 31,0 cm	●	●					
	1122	21.8 x 17.8 x 10.8 in	55,4 x 45,2 x 27,4 cm	23.8 x 20.1 x 12.2 in	60,5 x 51,1 x 31,0 cm	●	●					
	1322	21.8 x 17.8 x 13.4 in	55,4 x 45,2 x 34,0 cm	23.8 x 20.1 x 14.8 in	60,5 x 51,1 x 37,6 cm	●	●					
	1422	21.8 x 17.8 x 13.3 in	55,4 x 45,2 x 33,8 cm	23.8 x 20.1 x 14.8 in	60,5 x 51,1 x 37,6 cm	●	●					
	1622	21.8 x 17.8 x 15.9 in	55,4 x 45,2 x 40,4 cm	23.8 x 20.1 x 17.2 in	60,5 x 51,1 x 43,7 cm	●	●					
	827	26.8 x 17.8 x 8.2 in	68,1 x 45,2 x 20,8 cm	28.8 x 20.1 x 9.7 in	73,2 x 51,1 x 24,6 cm	●	●					
	1027	26.8 x 17.8 x 10.8 in	68,1 x 45,2 x 27,4 cm	28.8 x 20.1 x 12.2 in	73,2 x 51,1 x 31,0 cm	●	●					
	1127	26.8 x 17.8 x 10.8 in	68,1 x 45,2 x 27,4 cm	28.8 x 20.1 x 12.2 in	73,2 x 51,1 x 31,0 cm	●	●					
	1327	26.8 x 17.8 x 13.4 in	68,1 x 45,2 x 34,0 cm	28.8 x 20.1 x 14.8 in	73,2 x 51,1 x 37,6 cm	●	●					
	1427	26.8 x 17.8 x 13.3 in	68,1 x 45,2 x 33,8 cm	28.8 x 20.1 x 14.8 in	73,2 x 51,1 x 37,6 cm	●	●					
	1627	26.8 x 17.8 x 15.9 in	68,1 x 45,2 x 40,4 cm	28.8 x 20.1 x 17.2 in	73,2 x 51,1 x 43,7 cm	●	●					

**UNDERWATER KINETICS**  
 13400 Danielson St. Poway, CA 92064  
 tel: 800-852-7483 fax: 858-513-9111  
 email: casesales@uwkinetics.com

**UNDERWATER KINETICS EUROPE GMBH**  
 Schwertstr. 35, 42651 Solingen, Germany  
 tel: +49 (0) 212 / 242 13-0 fax: +49 (0) 212 / 242 13-30  
 email: info@uwkinetics.eu

